



FACA-200 and FACA-200-ISE

Fully Automatic Chemistry Analyzer



THE FACA-200 IS A BENCH TOP INSTRUMENT. THE CABINET IS OPTIONAL

Labomed introduces an automatic biochemistry analyzer with varying testing capacities. FACA-200 conducts 200 tests/hr and the FACA-200-ISE with 320 tests/hour, with True Random Access and 10 filters as follows: 340nm, 405nm, 450nm, 505nm, 546nm, 578nm, 620nm, 700nm, 800nm. Extra filters can be added.

Features

- Each set of FACA will come with one video to train in the installation, operation, and maintenance of the biochemistry analyzer: Random Access and Open System
- Automatic Washing System for Both Sample and Reagent Probe
- Liquid Level Detection and Collision Protection for Both Sample and Reagent Probe
- Reliable Cooling System for Reagent Chamber
- Works with Windows XP and Windows 7
- 80 Cuvette positions, semi-disposable plastic for min 30,000 tests/80 Cuvettes
- 8-step Cuvette wash station with two types of Systemic and special washing solution
- On-board refrigeration of reagents with independent switch [9° C below ambient temperature]
- External sample barcode reader, with positive identification of samples
- Powerful Reaction Cuvette Washing System
- User-Friendly Interface
- ISE module and barcode scanner (optional)
- Enzyme Kinetic GPT and GOT testing
- Automatic pre- and post-dilution
- Primary tubes up to 16 x 100mm and sample cups
- Preinstalled and validity limits for methods and reactions programmable
- Intelligent flagging system and extensive error log
- Reagent integrity check and extensive QC monitor
- Water consumption ≤ 3 liter/h
- Complete reaction curve and statistics for every sample/test—not only QC
- QC control function, based on Levy-Jennings chart analysis

Accessories

Item	Specification	Quantity
Reagent bottle 1	40ml	50Pcs
Reagent bottle 2 with holder	15ml	15Pcs
Reaction cuvette		80pcs
Serum Cup		1000pcs
Tube		1 set
Fuse(4A/8A)		4 sets
Lamp(13.8V/50W)		1Pc
Power cable		1Pc
Com Cable		1Pc
User manual		
Operation software		
Tool		1 set
Sensor		1Pc
Detect Probe		1Pc
Sample Probe		1Pc
Ground Cable		1Pc



1 Reagent Tray

40 reagent positions for FACA-301 and FACA-261
 80 reagent positions for FACA-401
 Cooling system may work independently for 24 hours.

2 Sample Tray

60 sample positions for FACA-301 and FACA-261
 88 sample positions for FACA-401

3 Cuvette

Either high quality UV-transmitted plastic
 cuvettes or quartz glass cuvettes available.

4 Independent Mixer

1 mixer for FACA-301 and FACA-261
 2 mixers for FACA-401

5 Sample probe/ Reagent probe

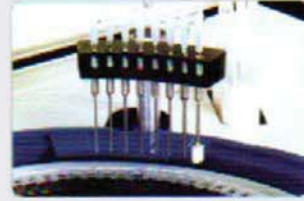
1 sample probe and 1 reagent probe for FACA-301
 1 sample probe and 2 reagent probes for FACA-401
 Only 1 sample / reagent probe for FACA-261

6 ELE Module

ELE module available on request.

Cuvette Washing Station

8 channels automatic washing station.



Independent Mixer

Independent mixer ensuring quick and complete reaction.



Reaction Cuvette

High quality UV-transmitted plastic cuvettes, or quartz glass cuvette (optional).



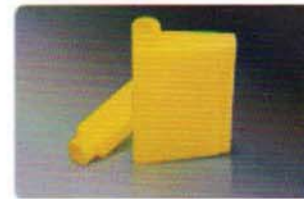
Sample Probe / Reagent Probe

With liquid level sensor, anti-collision sensor and automatic cleaning function.



Reagent Bottle

More convenient and economical ready to use reagent kits.

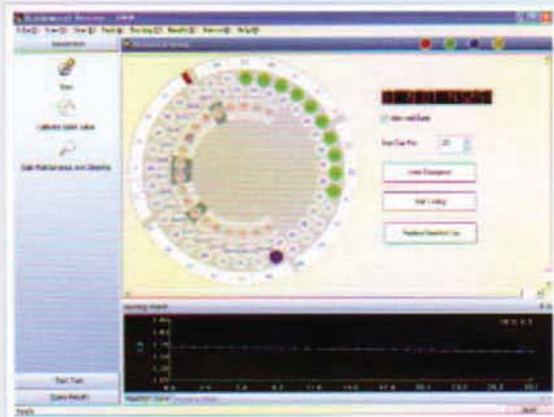


Reagent Tray

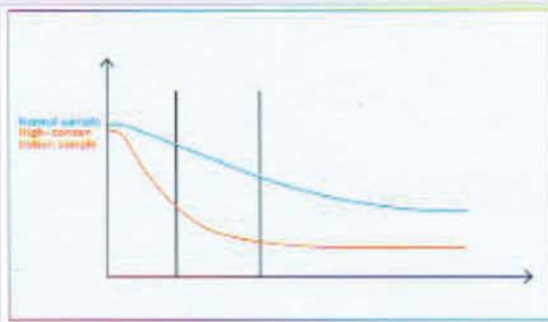
With cooling reagent chamber.



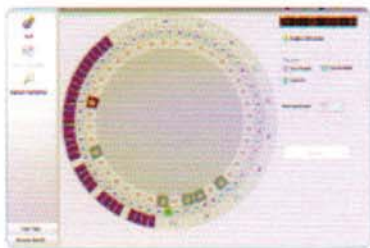
Software



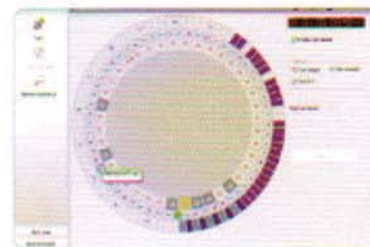
**User-Friendly Interface
Compatible with Windows XP, Vista or Windows 7**



Variable reading function

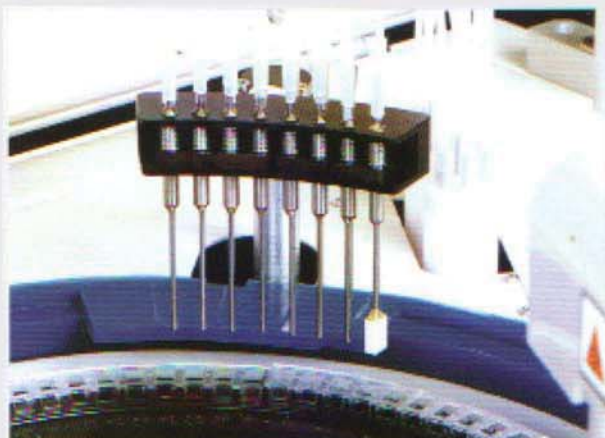


Carry Over Control Function



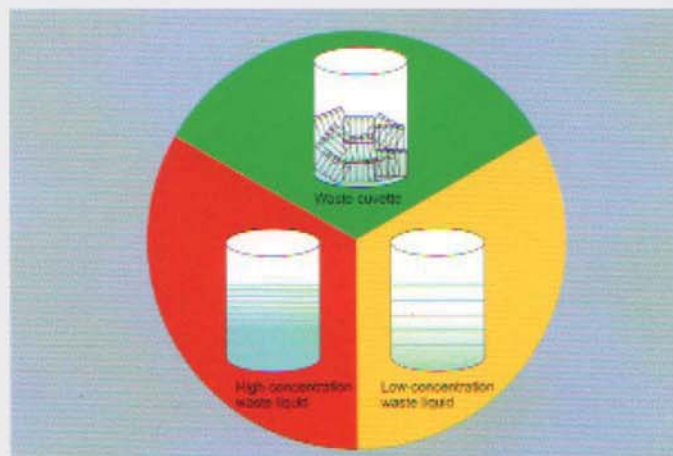
Automatic Alarm for Malfunctions

Automatic Washing Station



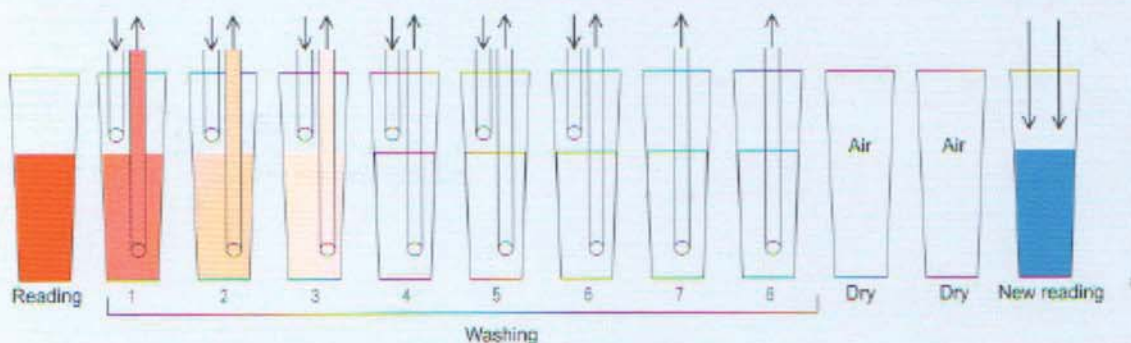
An 8-channel washing station ensures complete washing for cuvettes.

Environmental Protection Design



The waste is automatically classified and collected into different containers.

Automatic cuvette washing and blanking makes more precise results

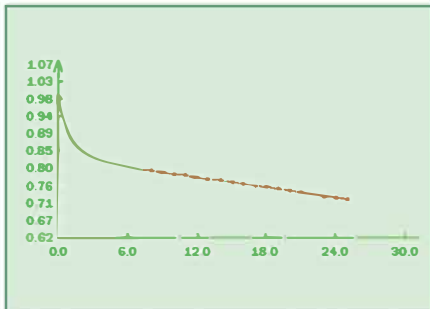


Wavelength	Reading	Wash1	Wash2	Wash3	Wash4	Wash5	Wash6	Wash7	Wash8	Dry	Dry	New reading
340nm	1.3100	0.025	0.0092	0.0037	0.0022	0.0008	0.0006	0.0005	0.0002	0.0800	0.0850	/
405nm	0.6920	0.0112	0.0075	0.0033	0.0019	0.0010	0.0005	0.0003	0.0002	0.0800	0.0805	/
450nm	0.5261	0.0108	0.0066	0.0031	0.0015	0.0009	0.0003	0.0003	0.0002	0.0806	0.0805	/
510nm	0.7005	0.0113	0.0055	0.0027	0.0012	0.0006	0.0002	0.0002	0.0001	0.0810	0.0811	/
546nm	0.5368	0.0184	0.0072	0.0043	0.0013	0.0008	0.0002	0.0002	0.0002	0.0840	0.0843	0.5080
578nm	0.0135	0.0135	0.0064	0.0031	0.0012	0.0006	0.0002	0.0002	0.0002	0.0800	0.0800	/
620nm	0.0189	0.0189	0.0054	0.0026	0.0010	0.0005	0.0002	0.0002	0.0002	0.0800	0.0800	/

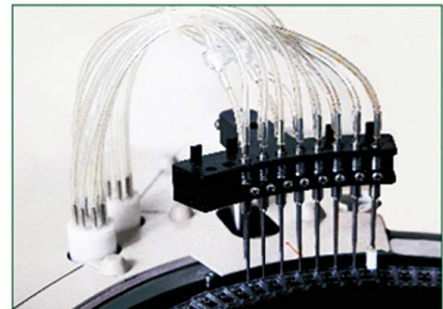
Test O.D. value-Real reagent blank=True O.D.value

General Features:

- New concept and more friendly software.
- New techniques and spare parts are used for much better quality and function.
- Automatic washing station for both sample and reagent probe.
- Liquid level detection and collision protection for both sample and reagent probe.
- Reliable cooling system for reagent chamber.
- Powerful reaction cuvette washing system.
- ISE module and barcode scanner(optional).
- Lower waste and more environment friendly.
- New concept test control system available (on request).



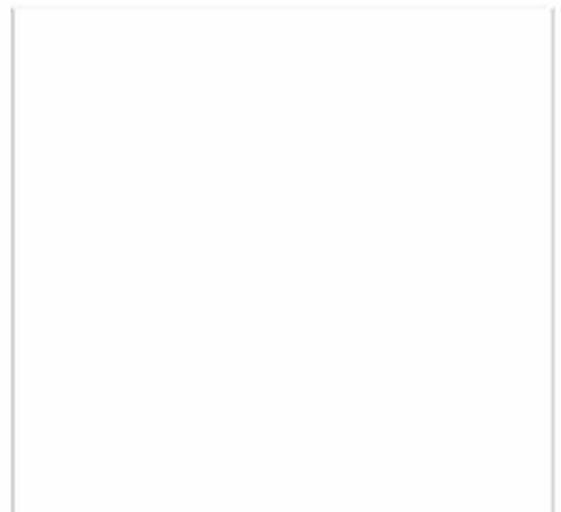
Reaction Cure Visible on line.

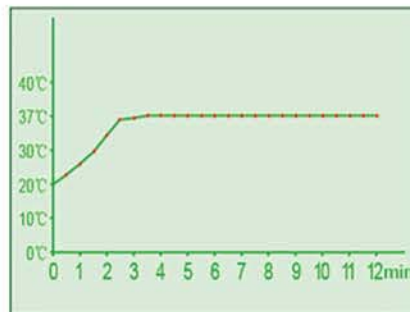


Cuvette Washing Station:
8 channels automatic washing station.



Independent mixer ensuring full
reaction of sample / reagent solution.





Quickly heating up and thermostable technique to ensure reaction solution reach $37\pm 0.5^{\circ}\text{C}$ within 160s and stable at $37\pm 0.2^{\circ}\text{C}$ more than 1200s.



Sample probe / reagent probe with liquid level sensor, anti-collision sensor and automatic washing function.



Reagent tray can be easily placed in cooling chamber.



LABOMED, INC.

All FACA Fully Automatic Biochemistry Analyzers have 2 different sample plates:
Standard sample plate for use with serum cup (serum order)



**STANDARD
SAMPLE
PLATE**

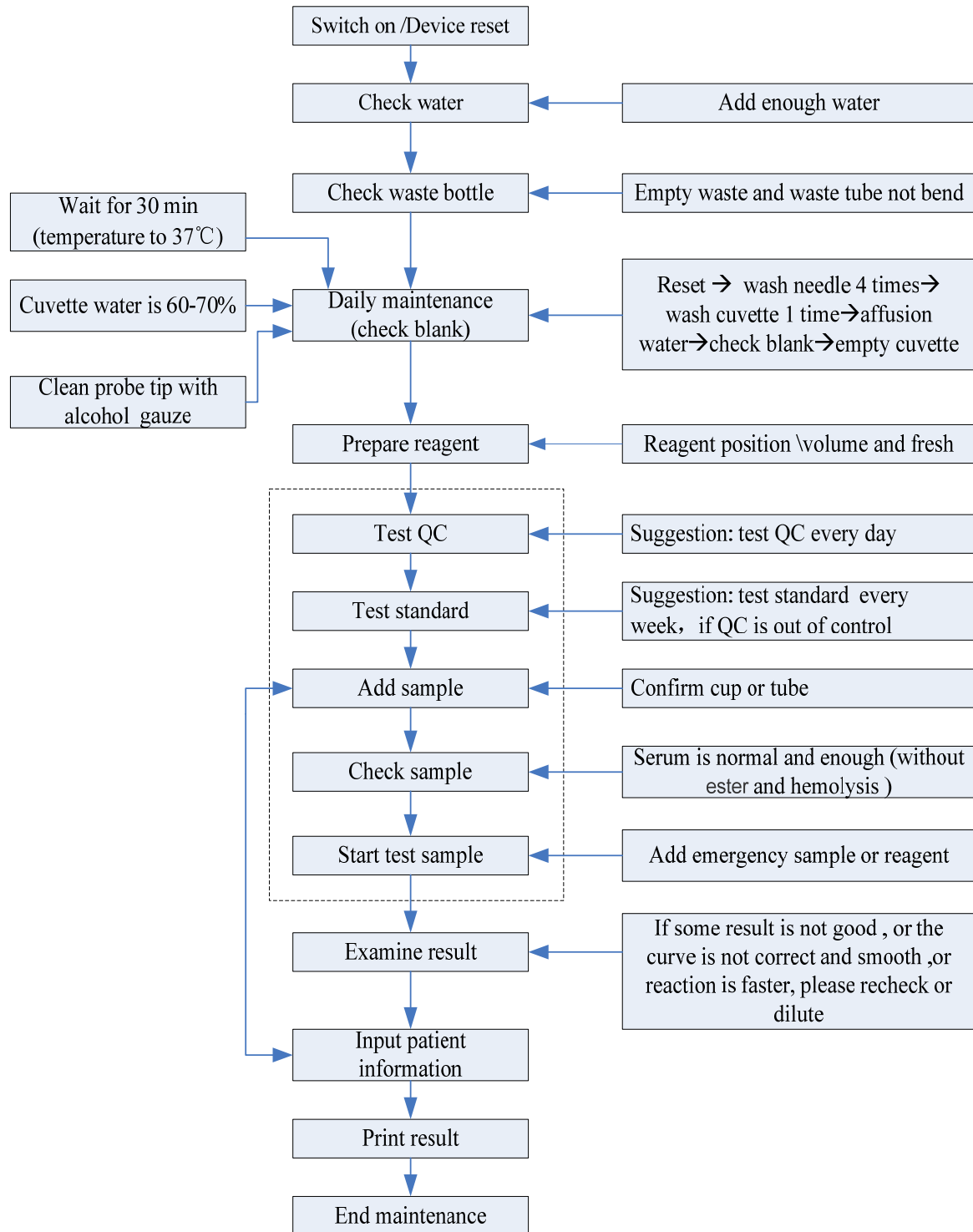
Test tube sample plate for use with 13x75 - 13x100mm test tubes (that is optional)



**TEST TUBE
SAMPLE
PLATE**

Labomed, Inc., Mailing Address: 2728 S La Cienega Blvd., Los Angeles, CA 90034 U.S.A.
TEL (310) 202-0811 FAX (310) 202-7286
Email: spectro@labomed.com, labomedinc@gmail.com

bichemical instrument analyzer SOP



“start work” : online→reset→wash needle 4 times→wash pipeline 4times→ wash cuvette 1 time→affusion → check blank and save→empty→reset

“stop work” : online→reset→wash needle 4 times→wash cuvette 1 time→affusion

Technical Specifications

Model	FACA-200 and FACA-200-ISE					
Assay Model	Random access with direct reading system					
Method	End point, Kinetic, Fixed time, Immunoturbidimetry, 1-2 reagent, Multistandard, reagent/serum blank, etc					
Assay Item	40 assay ISE mould (Na ⁺ , K ⁺ , Cl ⁻ / Li ⁺) available on request					
Throughput	Tests/Hour	200 tests/hour with one reagent				
	With ISE	320 tests/hour with one reagent				
Test Menu	T.BILI	r-GT/GGT	CHO	Ca	APOB-1/B	CHE
	D.BILI	ALP/AKP	TG	CL	APOB	CREA
	TP	UREA	CK	P	CK-MB	Mg
	ALB	CREA	LDH	C	ASO	AFU
	Lactic Acid	ALT/GPT	UA	α-HBDH	CO ₂	FMN
	LP(a)	AST/GOT	GLU	AMY	LDL-C	HDL-C
	CHE	LA	TBA	ADA	HS-CRP	PA
	Fe	Cu	Zn	C3	C4	IgG
	IgM	IgA	and drug, toxicity, etc			
	Sample Position	60 Including standard, control and stat; either serum cup or primary tube available				
Sample Volume	1~100µl, 0.1µl / step					
Reagent Position	40					
Reagent Volume	R1: 1~400µl, 1µl / step, R2: 1~400µl, 1µl / step					
Reagent / Sample Probe	With liquid level sensor, collision sensor, teflon coating and automatic washing station					
Reaction Time	0~999 seconds					
Cuvette	High quality uv-transmitted plastic cuvette. Quartz glass cuvettes available on request					
Cuvette Washing	8 channels automatic washing system for reaction cuvettes					
Probe And Mixer Washing	Independent washing station for each sample/reagent probe and mixer					
Alarm	Automatic alarm for malfunction (eg: collision, reagent / sample insufficiency, full waste container, etc)					
Calibration	Linear, Non-linear, Multi standard, K factor					
Sample Dilution/Retest	Sample can be diluted and retested if results are out of range or sample is insufficient. Also with calibrator auto diluting function					
Wavelength	340~810nm					
Light Source	Halogen lamp					
Absorbance Resolution	0.0001A					
Absorbance Accuracy	±0.0003A (0~2.5A)					
Repeatability (CV %)	≤2%					
Quality Control	Levy Jennings quality control program at 3 levels					
Bar Code	Optional					
Printer	Multiple report formats available					
Test Control Function	New card control system available on request					
Language	English, French, Spanish, German, Russian, etc.					
System	Windows XP or Vista ; Windows 7					
Power Supply	220V / 50Hz or 110V / 60Hz (optional)					
Dimension	85x75x75 cm (LxWxH)					
Weight	145Kg					