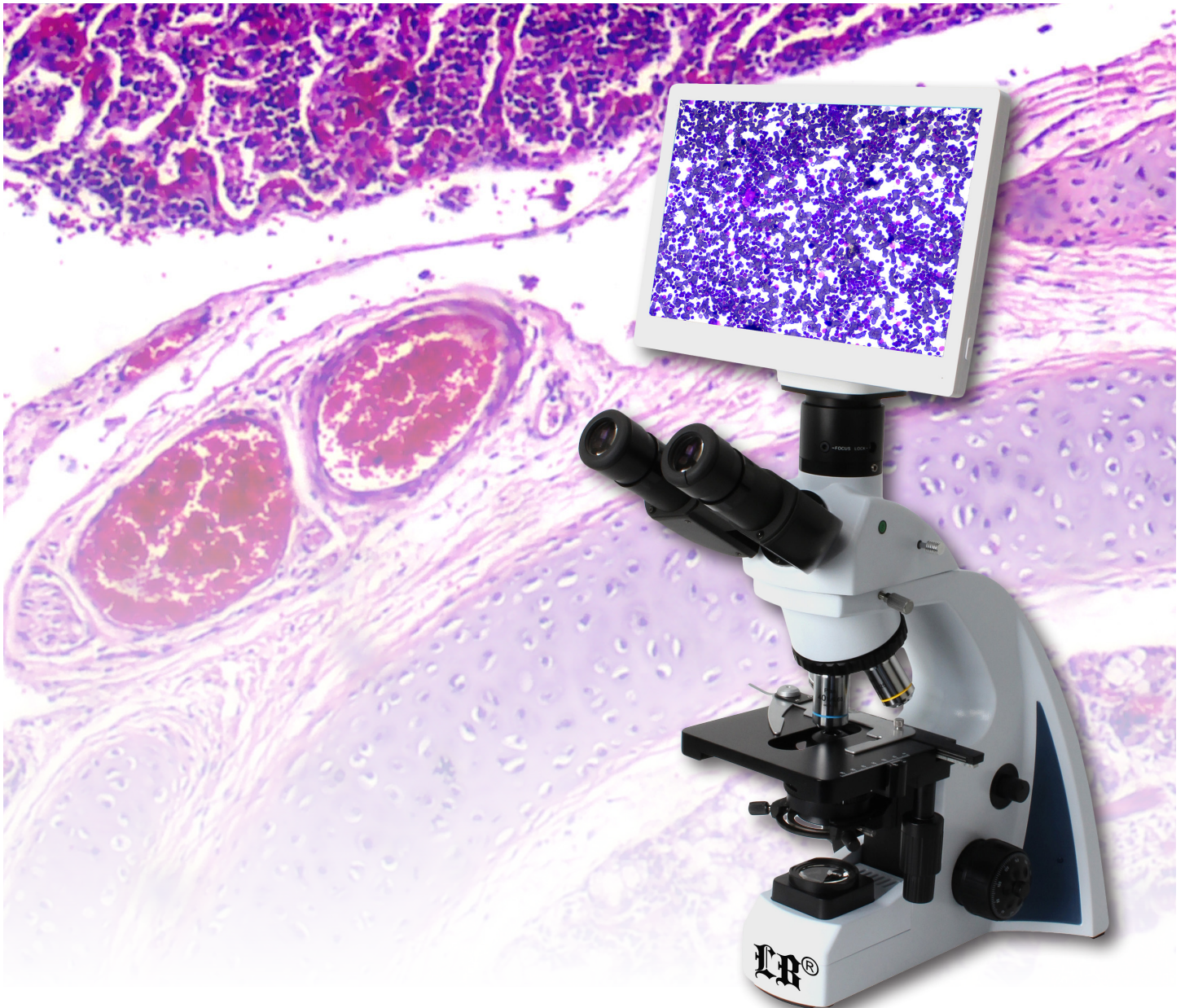




LB-1280

LCD Digital Biological Microscope



LB-1280 LCD Digital Biological Microscope

LB-1280 LCD Digital Biological Microscope has a built-in 6.0MP high sensitive camera and 11.6" 1080P full HD retina LCD screen. Both traditional eyepieces and an LCD screen can be used for convenient and comfortable viewing. The microscope makes the observation more comfortable and thoroughly resolves the fatigue caused by using a traditional microscope for a long time.

LB-1280 LCD Digital Biological Microscope not only feature HD LCD display to reverting genuine photo and video, but also feature quick and easy snapshots, short videos and measurement. It has integrated magnification, digital enlarge, imaging display, photo and video capture&storage on the SD card, it also can be connected to PC via USB2.0 cable and control by software.

APPLICATION

LB-1280 LCD Digital Biological Microscope is an ideal instrument in biological, pathological, histological, hematological, bacterial, immune, pharmacological and genetic fields. It can be widely used in medical and sanitary establishments, such as hospitals, clinics, laboratories, medical academies, colleges, universities and related research centers.

FEATURES

1. Infinite optical system and high quality 10×/22mm eyepiece and infinite plan achromatic objectives.
2. 6.0 megapixel HDMI digital camera, images and videos can be easily stored on the SD card without computers, can improve the efficiency of research and analysis, the camera has measurement functions.
3. 11.6-inch HD digital LCD screen, high definition and high quality images, easy for people to share.
4. LED lighting system, long working life and save energy.
5. Two types of observation modes: binocular eyepiece and LCD screen, can meet different needs.

Item	Specification	
Digital Parts	Camera Model	LC-19
	Sensor	Sony IMX307 CMOS Sensor
	Photo Resolution	6.0 Mega Pixel (3264 × 1840)
	Video Resolution	60fps@1920×1080
	Sensor Size	1/2.8 Inches
	Pixel Size	2.8um × 2.8um
	LCD Screen	11.6 Inches HD LCD Screen, Resolution is 1920 × 1080
	Data Output	USB2.0, HDMI
	Storage	SD Card (8G)
	Exposure time	0.001 sec ~ 10.0 sec
	Exposure Mode	Automatic & Manual
	White balance	Automatic
	Packing Dimension	305mm×205mm×120mm, 3kgs
Optical Parts	Viewing Head	Seidentopf trinocular head, 30° inclined, Interpupillary 48-75mm, Light distribution: 100: 0 and 50:50(eyepiece: trinocular tube), 30mm tube
	Eyepiece	Wide Field Eyepiece WF10×/22mm
	Objective	Infinite Plan Achromatic Objectives 4×, 10×, 40×, 100×
	Nosepiece	Backward Quadruple Nosepiece
	Stage	Double Layers Mechanical Stage 140mm×140mm/75mm×50mm
	Condenser	Sliding-in Centerable Condenser NA1.25
	Focusing System	Coaxial Coarse & Fine Adjustment, Fine Division 0.002mm, Coarse Stroke 37.7mm per Rotation, Fine Stroke 0.2mm per Rotation, Moving Range 20mm
	Illumination	1W S-LED Lamp, Brightness Adjustable
	Video Adapter	0.5× C-mount
	Packing	1pc/carton, 35cm*35.5cm*55.5cm, gross weight: 12kg

SAMPLE IMAGES

