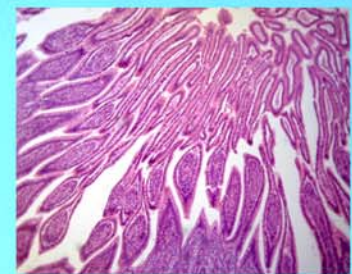




# LABOMED, INC.

www.labomed.com  
spectro@labomed.com



## LB-200 Binocular Biological Microscope with Finite Semi-Plan Achromatic Objectives and Extra Wide Field (Anti-Fungus)

Built-in transmitted illumination System LED  
Frame should have end opening, Stage Focusing Lock  
Stage height movement coarse and fine Focusing on both sides of frame  
Fixed quadruple nosepiece  
Abbe type with aperture iris diaphragm NA:1.25  
Finite Semi-Plan Achromatic objectives (anti-fungus)  
Extra Wide Field Eyepiece EW10x/18 with Diopter Adjustment as Optional  
Comfortable Observation with Eyepoint and Interpupillary Adjustable