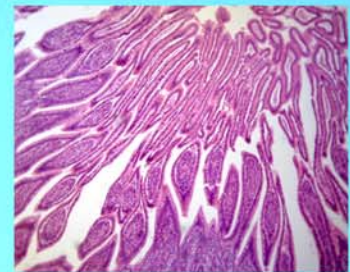




# LABOMED, INC.

www.labomed.com  
spectro@labomed.com



## **LB-247 Binocular Biological Microscope with Infinite Plan Optical System (Infinity Color Corrected System) and Extra Wide Field (Anti-Fungus)**

Infinite Optical System

Built-in transmitted illumination System LED

Frame should have end opening, Stage Focusing Lock

Stage height movement coarse and fine Focusing on both sides of frame

Fixed quadruple nosepiece

Abbe type with aperture iris diaphragm NA:1.25

Plan Achromatic objectives (anti-fungus)

Extra Wide Field Eyepiece EW10x/20 with Diopter Adjustment as Optional

Comfortable Observation with Eyepoint and Interpupillary Adjustable

Sliding-in Centerable Condense Adjustable

Handle for easy carrying

Advanced design of mechanical stage structure prevents the scratches of users.