



# **LB-615**

**Trinocular Laboratory Metallurgical  
Microscope with Infinite Optical System,  
Bright Field and Dark Field Objectives with  
Reflected and Kohler Illumination**



# LB-615 Trinocular Laboratory Metallurgical Microscope with Infinite Optical System, Bright Field and Dark Field Objectives, Extra Wide Field, Reflected and Kohler Illumination

LB-615 Trinocular Laboratory Metallurgical Microscope with Infinite Optical System, Bright Field and Dark Field Objectives, Extra Wide Field, Reflected and Kohler Illumination are high level professional microscopes which are specially designed for metallurgical analysis. With excellent optical system, ingenious stand and convenient operation, they will be your best choice. DIC observation attachment is optional for these microscopes to meet some special requirements.

## APPLICATION

LB-615 Trinocular Laboratory Metallurgical Microscope with Infinite Optical System, Bright Field and Dark Field Objectives, Extra Wide Field, Reflected and Kohler Illumination is widely used in institutes and laboratories to observe and identify the structure of various metals and alloys. It also can be widely used in the electronics, chemical and instrumentation industry to observe opaque materials and transparent materials, such as metal, ceramics, integrated circuits, electronic chips, printed circuit boards, LCD panels, film, powder, toner, wire, fibers, plated coatings, and other non-metallic materials and so on.

## FEATURES

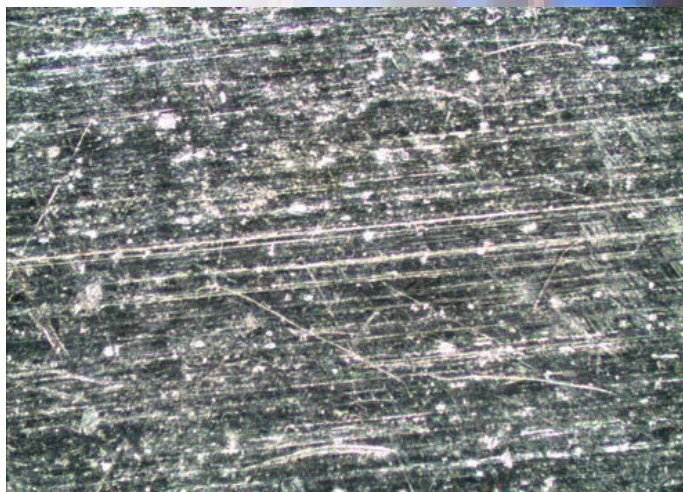
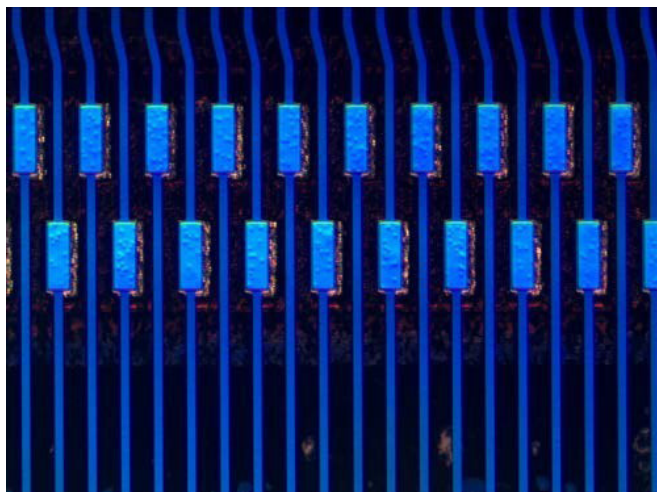
- Laboratory metallurgical microscope, including bright field, dark field and polarization observation system, DIC attachment is also optional.
- Powerful transmitted and reflected system with Kohler illumination.
- Ideal instrument for metallurgical analysis, industry inspection and science research.

## SPECIFICATON

Item	Specification
Optical System	Infinite optical system
Viewing Head	Siedentopf trinocular viewing head, inclined at 30°, interpupillary distance 48mm-75mm
Eyepiece	Extral wide field eyepiece EW10×/22mm, eyepiece tube Φ30mm
Infinite Plan Achromatic Objective	5×/ 0.12/∞/ - (BF&DF) WD 12mm
	10×/ 0.25/∞/ - (BF&DF) WD 10.0mm
	20×/ 0.4/∞/ 0 (BF&DF) WD 4.3mm
	40×/ 0.65/∞/ 0.17 WD 0.54mm
	100×/ 1.25/∞/ 0.17 WD 0.13mm
	50×/ 0.75/∞/ 0 (BF&DF) WD 0.32mm
Maximum Sample Height	30mm
	50mm

Reflected Light	24V/100W Halogen light, Brightness adjustable
	Kohler illumination and aspherical condenser
	Blue, Green, Yellow and Ground glass filter
Transmitted Light	Swing-out condenser NA0.9/ 0.25
	24V/100W Halogen light and aspherical condenser
	Blue filter
Focusing	Coaxial Coarse and Fine Adjustment, Fine Division 0.001mm, Coarse Stroke 37.7mm per Rotation, Fine Stroke 0.1mm per Rotation, Moving Range 30mm
Nosepiece	Backward quintuple nosepiece
Stage	Double layer mechanical stage(without hole) 186×138mm/ 74mm×50mm
	Double layer mechanical stage 186×138mm/ 74mm×50mm
	Specimen preparation plate
	Slide glass

### SAMPLE IMAGES



## OPTIONAL ACCESSORIES



Specimen Presser



DIC Attachment

